

Comprehensive Services provided by
George F. Young, Inc.

ARCHITECTURE

CIVIL ENGINEERING

ECOLOGY

HYDROGRAPHIC SURVEYING

LANDSCAPE ARCHITECTURE

PLANNING

SUBSURFACE UTILITY ENGINEERING

SURVEYING AND MAPPING

Office Locations:

GAINESVILLE

LAKWOOD RANCH

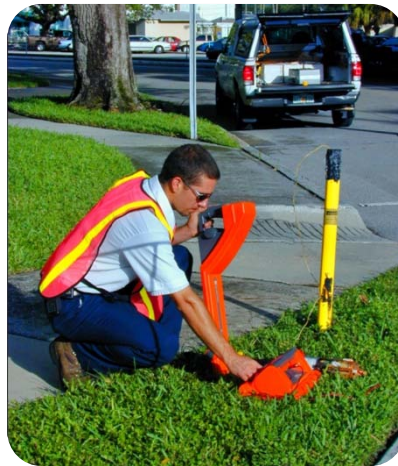
ORLANDO

PALM BEACH

ST. PETERSBURG

TAMPA

Subsurface Utility Engineering



The Subsurface Utility Engineering (SUE) department of George F. Young provides clients with a cost of saving non-destructive method of underground utility location and mapping, which provides valuable accurate location, size and type of underground utilities.

Our full range of services includes ground penetrating radar, utility designation, location, mapping, utility coordination, and permitting throughout Florida and the Caribbean Basin. Our clients include national Transportation Engineering companies and the Florida Department of Transportation, as well as the private sector.

You can count on George F. Young for your next project. We will work closely with you to:

Turn your vision into reality.

Subsurface Utility Engineering Services

Subsurface Utility Engineering (SUE) is a process that utilizes Engineering, Surveying, and Mapping to identify and locate underground utilities during the early development of a project. The SUE process can be used for public works or private projects in conjunction with any excavation activity such as the placement of new utilities, upgrading existing utilities, or roadway construction or improvements.

Four major activities are involved in Subsurface Utility Engineering:

- ▶ **Designating** is the use of the surface geophysical techniques to determine the existence and approximate horizontal position of underground utilities.
- ▶ **Ground Penetrating Radar (GPR)** offers the latest advancements in SUE. GPR is a cost effective, non-intrusive geophysical investigation method for locating subsurface features.
- ▶ **Locating** is the use of non-destructive vacuum excavation equipment at critical points along a subsurface utility's path to determine the precise horizontal and vertical position, size, composition and the condition of buried utilities.
- ▶ **Data Management** involves surveying and mapping the utility information obtained by designating, GPR and locating to provide its location in relation to the provided project control and providing the information in CAD and/or GIS format.

How does SUE lower you projects cost?

- Determine the dimensional location of existing utilities, thus reducing the possibility of utility conflicts and costly relocations during the construction of the project
- Reduce the potential for "down time" claims, injuries, project delays, services disruptions and legal action
- Provide contractors the information they need to reduce their bid prices.

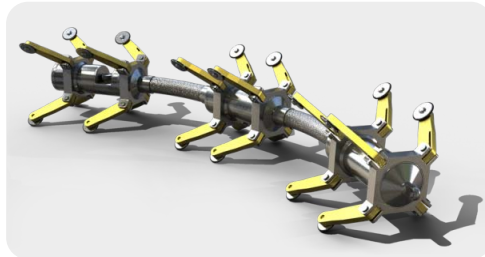
OUR ADVANTAGES

Subsurface Utility Engineering offers you the following advantages:

- FDOT Prequalified
- We will be your partner, not your competitor.
- Ease of access to Senior Management that only a locally owned company can provide.
- Work completed on schedule with no delays due to a learning curve.
- Lower project costs resulting from years of similar experience.



Innovative Solutions



George F. Young, Inc. is committed to partnering with our clients to solve problems and do so by offering creative solutions and utilizing cutting edge technology.

George F. Young, Inc. is proud to introduce the use of Smart Probe™ Technology to our list of services. Some key features of this innovative of equipment are:

- Maps underground piping
- Gyroscope-Based inertial Measurement Unit
- Provides accurate 3D measurements of pipelines for as-built pipe diameters from 1/5" to 96"

As of now, George F. Young is the only company licensed to use this equipment in the United States. We are excited to offer this service to our clients as a way to accurately and cost effectively determine the location of underground pipes.

A Team Approach

When you select George F. Young, Inc. you get the entire resources of the GFY team of Architects, Civil Engineers, Ecologists, Landscape Architects, Planners, Subsurface Utility Engineers, and Surveyors and Mappers to seamlessly survey, design, permit, and construct your project.

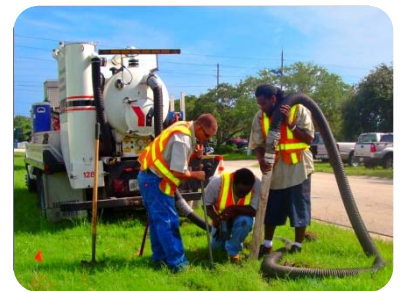
By providing all of the above critical services in-house, we maintain better control of schedule and budget.

Your Project Manager will be your single point of contact and will control our comprehensive in-house team. Team meetings can be scheduled in an instant and be conducted efficiently.

With only a select few Subconsultants on the team, we are able to effectively manage their efforts to create a seamless workflow. We only use reliable Subconsultants that we have worked with and are confident in their ability to meet our high standards of service and quality.

You can rely on George F. Young, Inc. for innovative solutions that work to:

Turn your vision into reality.



Y George F. Young, Inc.
Turning Vision into Reality Since 1919

1 (877) GFY-1919 Toll Free

727 822-4317 Phone

Email: crawford@georgefyoung.com

www.georgefyoung.com

A locally owned Florida firm
Serving Florida and the Caribbean Basin